

FACT SHEET

Information Fact Sheet
for International Exchange
Partners and Students

EXCHANGE AND COURSE INFORMATION

Application procedure

latrobe.edu.au/study/exchange-and-study-abroad/exchange

Home institution must officially nominate the student before student completes the application.

Application deadline(s) for admission

For Semester 1 (February to June):
1 October (previous year)

For Semester 2 (July to
November): 15 March (of the same
year)

Application material required

La Trobe University online application form must be submitted along with the following supporting documents:

- One Academic Reference
- Personal Statement: 1 page about why you would like to study on exchange at La Trobe University.
- Official academic transcript from your home university (to be sent by your home coordinator)
- Proof of English (where required, to be sent by your home coordinator)

Complete your online application here:
<https://isisprd.latrobe.edu.au/ISIS/Portal/Login.aspx?ReturnUrl=%2fisis%2fportal%2fDefault.aspx>

All students must have an official nomination from their home university to be eligible for exchange at La Trobe University.

Area of study open for exchange students

Subject Database gives the description of the units, semester of teaching and if it is available for exchange/study abroad students or not.

Also use: latrobe.edu.au/courses/a-z

latrobe.edu.au/international



Most areas of study are available for exchange students – unless otherwise stated on the description.

When selecting units please make sure that you chose units relevant to your current level of study. The numeral on the unit denotes the year level.

latrobe.edu.au/students/subjects

English Language studies

All students who are from a language background other than English and are accepted to the exchange program can take up the unit “English as a second language 1 - EDU1ESL”.

Minimum English language entry requirements of the University apply.

Level of exchange study available

Undergraduate and Postgraduate

Language of instruction

All classes are conducted in English (excluding the language classes)

La Trobe University study semesters

Semester 1: February to June

Semester 2: July to November

latrobe.edu.au/calendar

CONTACT INFORMATION

Full name of University

La Trobe University

Name of Study Abroad Office

La Trobe Abroad

Mailing Address

La Trobe International
Level 3, Sylvia Walton Building
La Trobe University
Bundoora VIC 3086
Australia

CONTACT US

T +61 3 9479 2112

E studyabroad@latrobe.edu.au

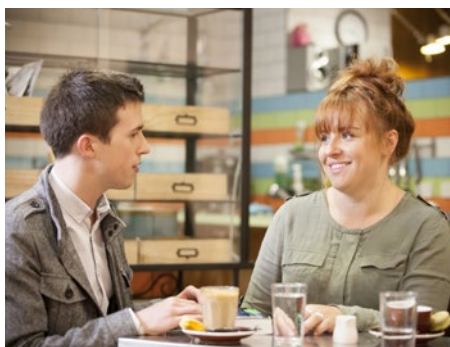
Facebook

Search for: La Trobe University Study Abroad and Exchange Group

La Trobe University Study Abroad and Exchange Program

LTA Resource Centre
Global Lounge
Level 2, Agora East (behind Cafe Veloci)





EXCHANGE AND COURSE INFORMATION (CONTINUED)

Full time study load credits per semester

45–60 LTU credits (standard load being 60).

It is possible to overload however only by special approval.

Average credit points per course

Generally 15 credits per unit – but this can vary by area of study and college/school

Possible exchange period

One or two semesters (subject to nomination by home university and availability of places)

English Language requirements

latrobe.edu.au/study/how-to-apply/international/english-and-academic-requirements/english-language-requirements

Preparatory English Language course for incoming students

latrobemelbourne.edu.au/courses/english-courses

Please note: the tuition fee is applicable for all students.

ACCOMMODATION, ORIENTATION AND STUDENT SUPPORT SERVICES

Accommodation options, application procedures and deadlines

Students apply for accommodation independently. Our accommodation options and application process are detailed on the following website: latrobe.edu.au/accommodation

To secure on-campus accommodation a student must have a valid offer from La Trobe University.

Living costs

latrobe.edu.au/experience/living/costs

Orientation session(s)

latrobe.edu.au/students/new-students/orientation

Airport pickup

latrobe.edu.au/students/new-students/international/leaving/airport

Predeparture and arrival information

latrobe.edu.au/students/new-students/international

Life in Australia

latrobe.edu.au/experience/living

Support services

latrobe.edu.au/students/international/support/supportservices

Clubs and societies

<http://unione.latrobesu.org.au/clubs/>

Information about the campuses

La Trobe University's largest campus – Melbourne (Bundoora) is located 14km from the Central Business District of Melbourne. Melbourne is often referred to as Australia's cultural and sport capital and was voted the world's most liveable city in 2012 and 2013, based on its cultural attributes, climate, cost of living, and social conditions such as crime rates and health care.

La Trobe University has seven campuses with our second largest campus in the beautiful regional town of Bendigo. More information about campuses can be found on the following website: latrobe.edu.au/campuses

VISA RELATED INFORMATION

Visa requirements

latrobe.edu.au/students/new-students/international/visa

Compulsory health insurance cover

It is a visa requirement that students have valid Overseas Student Health Cover for the duration of their visa. La Trobe University has an agreement with OSHC by Allianz Global Assistance.

Students will be advised regarding the purchase of the health cover along with their offer.

<https://www.oshcallianzassistance.com.au/default.aspx>

Cover will be arranged by La Trobe University as per immigration requirements through OSHC by Allianz Global Assistance once the student pays an additional amount along their acceptance of the La Trobe University offer. You will receive information on how to activate your account and receive your membership details when you register at La Trobe University upon arrival.

Health facilities at the University

latrobe.edu.au/experience/living/healthcare